

# Northwest Vintage Car & Motorcycle Museum Newsletter

**Volume 5 issue 3**  
**July–September 2007**  
 Museum mailing address:  
 P. O. Box 15  
 Salem, Oregon, 97308-0015

## Inside this issue:

Car Show Sponsors	2
Annual Report	3
Member/Board Minutes	5,6
Letter from the President	7
US Auto Museums	8
Autumn Tour (register now)	9
Upcoming Events	11
It's Time for Dues	12



<http://www.nwcarandcycle.org>

Al & Sue Lake-Editors

The Museum is located in  
 Brooks, Oregon,  
 west of Interstate 5  
 10 minutes north of Salem  
 30 minutes south of Portland

Send newsletter articles to:  
 Al Lake at:  
[allvintagecar@comcast.net](mailto:allvintagecar@comcast.net)  
**Deadline for the next  
 newsletter is: September 15th**

## Museum Activities

### Meetings

**Member/Board meetings**  
 the third Wednesday of  
 each month at 6:30 at the  
 Service Station. All  
 members are welcome to  
 attend.

**Education Committee  
 meetings.** Meetings are  
 open to all members and  
 are held at the Service  
 Station at 6:30 pm on  
 July 16, Sept. 10, and  
 Nov. 10. See page 5.

### Coming Events

**Third Annual Swap Meet,**  
 July 21, Powerland.  
 Setup & BBQ on July 20.  
 See article on page 7.

**Great Oregon Steam-Up  
 Car Show,** a NEW event,  
 August 4, 7-3:30.

**Silver Falls Autumn Tour,**  
 October 20, tour article is  
 on page 9.

## High School Show & Shine Car Show by Al Lake

Even though it rained on  
 us the 2007 High School  
 Show & Shine Car Show  
 was a huge success.  
 The Museum Gazebo  
 was a great showcase  
 for the awards and an-  
 nouncing. The trees on  
 the field are getting lar-  
 ger and looking good.  
 The field withstood the  
 rain, the cars, and the  
 kids in great shape. It is  
 truly an awesome place  
 to have a car show.

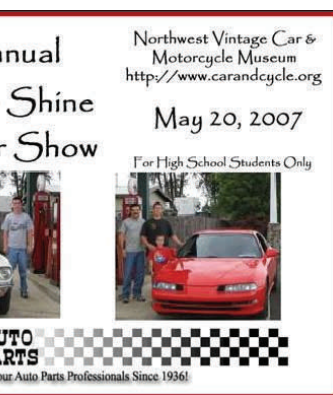
First, we thank this  
 year's Car Show co-  
 chairs, Rae and Bruce  
 Scott, for their leader-  
 ship and their long hours  
 of hard work. You folks  
 did a great job and we  
 appreciate it.

We thank all of the  
 Sponsors who made the  
 Car Show possible (see

the next  
 page for a  
 list). With-  
 out your  
 support  
 we would  
 not be  
 able to put  
 on this  
 premiere  
 event.

We thank  
 the students  
 who partici-  
 pated in the Car Show.  
 All that could be seen  
 the entire day were  
 smiles. You folks were  
 tireless, excited, and  
 great to be with.

Last, we thank the vol-  
 unteers who helped  
 create, set up, provide,  
 and take down the Car  
 Show. Everyone was  
 enthusiastic, willing to



2007 Car Show Dash Plaque

do any job, any time,  
 and were happy and  
 cheerful. It is fun work-  
 ing with you.

### Thanks to everyone!

More information about  
 and pictures of the Car  
 Show can be found on  
 the Museum website at:  
<http://www.nwcarandcycle.org/Events/CarShow.html>

## Museum Information

The Northwest Vintage Car &  
 Motorcycle Museum is a group of  
 people who are interested in vin-  
 tage cars, trucks, and motorcy-  
 cles. The Museum is an entirely  
 volunteer, membership-owned  
 museum open to people of all  
 ages, with or without a vehicle.  
 Come find out about vintage cars,  
 trucks, and motorcycles.

## Thanks to all of the 2007 Car Show Volunteers

Volunteers at the High School  
 Show & Shine Car Show include:

Arnie Anderson  
 Carlotta and Dale Arnold  
 Neil Beutler  
 John and Bev Chandler  
 Burt Edwards  
 Lisa and Greg Gettig  
 Ray Hansen  
 Bert and Lucy Harrison

Bill and Ferne Hellie  
 Dan Judy  
 Eric Olson and Marilyn Kongsleie  
 Al & Sue Lake  
 Larry Leek  
 Doug and Kay Nelson  
 Marvin Nisley  
 Bruce and Rae Scott  
 Ron and Ann Sowerby  
 Ed Weber

## 2006-07 Museum Board Officers

Doug Nelson	Chairman
Mike Bostwick	President
Tom Ruttan	Vice President
John Chandler	Treasurer
Ferne Hellie	Secretary
Tom Kneeland	Building Chair
Neil Beutler	Special Events Chair
Bert Harrison	Collections Manager
Ray Hansen	Education Committee

Don Blain	Bill Hellie
Mike Larsen	Larry Leek
Ed Weber	Bud Wright
Bjorn Klingenberg	

## Contact Information

Northwest Vintage Car & Motorcycle Museum  
P.O. Box 15  
Salem, OR 97308-0015

### Contacts:

Doug Nelson, Chairman, Board of Directors, (503) 399-0647 or Mike Bostwick, President, (503) 245-5444.

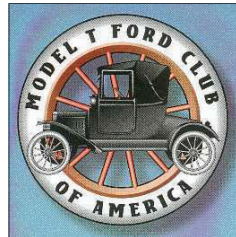
The Northwest Vintage Car & Motorcycle Museum is a 501 (C) (3), not for profit organization, bringing together those people interested in displaying collectible vehicles and related materials more than 25 years old. Our educational programs are for all ages and will have a strong emphasis on serving the youth.

On the web at: <http://www.nwcarandcycle.org>

## Show & Shine Car Show Sponsors



Collectors Foundation



Willamette Valley Model T Ford Club



Baxter Auto Parts



Pentastar Pride Club



State Farm Insurance  
Joe Guerra



Industrial Finishes and Systems



Dan Judy Automotive



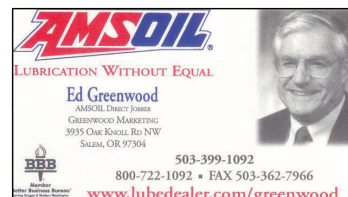
Bank Of Salem



Hear No Evil



Keizer Collision Center



AMSOIL



Roberson Motors



Industrial Source Welding  
Supplies and Gases



Brooks True Value  
Hardware



Mountain West



Certified Automotive Repair



MAACO



Les Schwab Tires



Pacific Sanitation



South Commercial  
Auto Company



MJB TREES

# Thanks!

Say **"THANKS"** to our  
High School Show &  
Shine Car Show  
Sponsors by  
supporting them!

---

## Annual Report by Doug Nelson, Museum Board Chairman

Dear Museum Members,  
At midyear 2007 we are in the 5<sup>th</sup> year of operations! It is useful to briefly review our history, note some current events and get a glimpse of future activities and projects.

### HISTORY:

Our accomplishments are many. We have been among the leaders in membership growth and on-site construction at Antique Powerland – our 1930's Texaco Service Station, the creation of our landscaped show field with a 1940's timber-framed gazebo and, of course, the 16,000 sq. ft. slab for our main building.

We have embraced the Historic Village Concept and are doing our part by building asphalt roadways and our portion of the on-site storm drainage system.

### PRESENT:

Our successful education programs are investments in the future, with classes in the Texaco Station and Annual High School Shown and Shine Car Show.

We are practicing the museum concept by engaging members and guests in social and educational activities during Steam-up and our other events. Our Powerland museum partnerships are producing results. NWVC&MM hosts the fastest growing segment of the calendar at Antique Powerland and is sharing its facilities and member talents with the other museums and clubs.

Fund raising is the most important objective today. Grant applications are currently being prepared and submitted by the Fund Raising Committee to support the construction of our main exhibit building. Grant foundations expect that we raise a significant portion of our overall funds, as we have proven we can do by selling over \$45,000 in paver stones. This amount was matched by an anonymous donor and leveraged with volunteer labor and in-kind donations, enabling us to build footings, a foundation and slab for our main museum – a \$120,000 debt free asset.

The Step Forward program is designed to raise \$100,000. Each step is worth \$10,000 and rewards the donor with the naming right to a steel truss and a handsome wooden bench. "The Challenge" building fund program allows pledges of any amount in one or more payments. These matching programs demonstrate to grantors our willingness and ability to support fund raising.

### FUTURE:

What does the future hold? As we are successful and continue

to build our membership and physical facilities, the museum is being recognized as a positive part of the community.

Ideas for future projects include working with students, building Model T Ford Speedsters and visiting retirement communities to interact with seniors.

How can you help?

- Volunteer to visit vehicle clubs, retirement communities, service clubs and organizations;
- Volunteer to conduct educational classes, share your knowledge in your area of expertise;
- Recruit docents and mentors;
- Sign up new members;
- Attend Member/Board meetings;
- Participate in off-campus events such as the Iris Festival, Oregon Garden car shows, and our own museum events;
- Continue to donate your time and memorabilia;
- Join in the fund raising efforts.
- There is much to do!**

As one of our members, you can appreciate where we are headed, and the importance of getting our main building up and running in the next two years.

Best regards,  
Doug Nelson  
Board Chairman

---

## The Challenge - Investment in Our Future by Bev Chandler

Would you like to see your museum building constructed by July 2008?

Would you like to increase the possibility of our Museum receiving funds from trusts and foundations?

Would you like to be a part of building the "cornerstone" for a working museum and education center?

Would you like to bring NWVC&MM one step closer to accomplishing the Mission Statement?

LOOK FOR A SEPARATE MAILING WITH FURTHER INFORMATION.



## Model T Parts Donation

Dale and Marie Turnidge donated Model T and Model A parts to the museum for our proposed Model T Speedster program for high school students. These parts include frames, motors, wheels, and more. These parts are enough to assemble, perhaps, two speedsters. Chuck Neal, Neil Beutler, C.J. Nelson, Doug Nelson, and Larry Leek helped Dale Turnidge load and haul these parts to storage.



Before the word "Hotrod" was ever coined young speed demons drove Speedsters. These were Model T Fords; cheap, basic, and plentiful. There were plenty of Model T Fords available. Ford made more than 15 million of them.

These Speedsters were usually quite simple...fitting with the meager monies of the youth of the day. To make a Model T speedster you removed as much of the car as you could get away with. You might even have pushed the front end forward a few inches to improve the weight distribution. If you had the money you might even have installed an overhead valve kit. With skill and money you could increase the meager 20 stock HP of the Model T to near 80 HP. With a car that weighed about 1200 pounds 80 HP could really move you along. This also meant you needed to improve the brakes. What fun!

Source: <http://classics.nu/speedsters4home.html>

## Campus Use Policy

By Ed Weber

The 1-½ acre outdoor campus has grown into a beautiful area with grass, trees, and a new 24' diameter Gazebo. Decorative rockwork around the base and a handicap ramp are still to be installed on the Gazebo. A new hedge consisting of 49 California Lilac plants has been established on the south between our Museum and the Logging Machinery Museum.

The Campus is to be used for vintage car and motorcycle-related activities. All individual members and club members must make arrangements to use the facility with the Events Coordinator and the Maintenance Coordinator two weeks in advance. The Campus and Gazebo cannot be used unless it has been prearranged.

The Events Coordinator is Don Lauinger. He can be reached at 503-678-1816. Don's role is to help applicants with scheduling and to advise them of the fees that will apply in their use of the campus. The Maintenance Coordinator is Ed Weber. He can be reached at 503-390-3804. Ed's role is to adjust sprinkler system schedules for the campus and to prepare the campus for arranged events.

If Don and Ed are not available applicants may contact the Board Chairman, Doug Nelson, at 503-399-0647.

## More Parts Donated

Doug Cameron donated steering columns, rear-ends, front brake drums, 5 wheels, 2 radiator shells, a complete leaf spring and a radiator to the speedster project. Thanks Doug.

## Boy Scout Activity

by Doug Nelson

On July 11, 2007 Antique Powerland Museum Association is hosting 40 Boy Scouts ages 10-12 and their parents for one hour sessions at four different museums: Trolley Car; Truck; Steam Sawmill and our Car and Motorcycle Museum.

Our topic, of course, involves the automobile and motorcycle.

Member Bert Harrison will demonstrate the workings of his 1913 Model T Ford and will lead a discussion of the importance of putting America on wheels in the early 20<sup>th</sup> century.

Education demonstration and discussion of history is what the Museum is all about.

Powerland Museum folks are enthusiastic about this kind of activity and will be gearing up to handle more groups and different age brackets. Volunteers will be needed in the future. If you are



interested in serving the community this way please call Doug Nelson 503-399-0647 or Ray Hansen at 503-393-4228.

## Donations and Loans to the Museum

We are asking all of you who wish to donate things to our Museum to use the forms that the Museum has set up. All cars and related parts must be reviewed by the Collections Committee to be accepted by the Museum. We

need to get the proper information on what is being donated and by whom for our records.

The donation and loan form is on the website. Go to <http://www.nwcarandcycle.org/donations.html>

## April 18, 2007 Museum Member/Board Meeting Minutes

### Attending:

Arnie Anderson  
 Neil Beutler\*  
 Don Blain\*  
 Doug Cameron  
 John Chandler\*  
 Burt Edwards  
 Bert Harrison\*  
 Bill Hellie\*  
 Ferne Hellie  
 Mike Larsen\*  
 Les Layton  
 Chuck Neal  
 Marv Nisly  
 Tom Ruttan\*  
 Ed Weber\*  
 Roger A. White  
 Bud Wright\*

\*Board Member

Don Petersen reported that plans for the Swap Meet are well-developed. Tom Ruttan suggested that we make an area available for Clubs to participate. After some discussion he moved that we set aside an area for 25 Clubs to promote their memberships. No parts will be sold at these tables.

Tom Ruttan distributed a draft copy of a flyer announcing the Great Oregon Steam-Up Vintage Car & Motorcycle Show at Powderland on Saturday, August 4. Two free tickets to Steam-Up will be given to those who bring their

vehicle by 9:00 a.m. and leave it in place until 3:00 p.m. The show vehicles may participate in the parade. We will have a ticket booth at the entrance. Because of lack of space regular cars will be parked in the main parking lot. Ed Weber distributed flyers from the Salem Car Council. See the Upcoming Events on page 11 of this newsletter.

Doug reported that we have been given the "go ahead" from Spirit Mountain to pursue a grant request for \$100,000. Bev Chandler, Doug Nelson, and Ferne Hellie will turn in the request on May 15. Any large grant by Spirit Mountain Community Fund will be given as a challenge grant. We must raise 90% of the amount in additional funds. We are also working on other grants at this time. We are asking for the steel package to complete the exterior of our main museum building. We hope funds will be available to start building next spring.

We are launching a fund raising program, called the Step Forward program. This program is designed to raise \$90,000 or more by selling naming rights to the 9 trusses for \$10,000 each. People may pledge in amounts from \$1,000 to \$10,000 for each truss. Bev Chandler and Ed Weber are printing a prospectus to show our

donors. Call Doug Nelson if you want to contact someone, as he is keeping a list of possible donors and we don't want to overlap.

A Challenge program is being offered at the same time, for amounts under \$1,000. If you can give a small amount monthly for one to three years it would go a long way to raising our building funds. The Paver Brick sales are continuing.

John Chandler reported that we have \$14,289 available for operating expenses, and \$9,286 available in construction funds. Other funds in those accounts are restricted.

Ray Hansen reported that the Education Committee is developing a history of the museum, which can be used in many ways. Don Petersen invited members to the Monarch Hotel at Clackamas for a reception in preparation of the Forest Grove Concours.

Bjorn asked that we contact him prior to July 29 for the October tour to Silver Creek Falls.

Bert Harrison announced that the Willamette Valley Model T Club has once again provided insurance for the High School Show & Shine Car Show.

Doug Towsley offered maple and fir logs for museum use. He needs to contact Dick Green to make arrangements for storage.

## Education Committee Meetings and Seminars

### Meetings

- Education Committee meetings are open to all members and will be held in the Service Station at 6:30 pm on the following dates:
- July 16
- September 10

### Seminars

- September 1 - BMW Motorcycle presentation
- September 15 - Jerry Grulkey presentation.
- October - there will be a motorcycle group presentation.

Board/Member meetings are the 3rd Wednesday of each month.  
 6:30 pm in the Service Station

**Everyone is welcome.**

## May 16, 2007 Museum Member/Board Meeting Minutes

### Attending:

Arnie Anderson  
Neil Beutler\*  
Don Blain\*  
Doug Cameron  
John Chandler\*  
Burt Edwards  
Bert Harrison\*  
Bill Hellie\*  
Ferne Hellie  
Mike Larsen\*  
Les Layton  
Chuck Neal  
Marv Nisly  
Tom Ruttan\*  
Ed Weber\*  
Roger A. White  
Bud Wright\*

\*Board Member

Vice President Tom Ruttan opened the meeting in the absence of President, Mike Bostwick and Chairman Doug Nelson.

- He also mentioned the following events:
- The Museum Barbeque and Auction on July 20
- The Northwest Vintage Car & Motorcycle Museum Swap meet and Clubman Motorcycle Show July 21 (there will be spaces for car clubs to promote their clubs)
- The Northwest Car Clubs Car Show and Swap Meet on Oct. 13 and 14.

Tom advertised the Vintage Car & Motorcycle Show at Antique Powerland during the Great Ore-

gon Steam-Up on Saturday, August 4, 2007, from 10:00a.m. to 3:00p.m. Entrants will receive 2 free Steam-up tickets. Cars must remain in the Museum show area until 3:00 p.m. There will be no awards or judging.

### Reports

Ferne Hellie reported that the Spirit Mountain grant request for \$100,000 to place our steel structure on the concrete slab has been completed. We are also raising \$100,000 in matching funds. We will know if the grant has been approved around August 31. Other grant requests are being prepared as well. We must raise \$600,000 or more to complete our main museum building. John Chandler reported that we have \$13,830 in funds available for Operating Expenses, with \$8,428 available for construction at this time. We have other funds set aside for purchase and engraving of the bricks.

John attended the APMA meeting and reported that they need additional help during Steam-up. The Wednesday job lists are posted and the complimentary lunches have begun, so come out and help on the grounds any Wednesday. Three new line shaft buildings will be built; one of steel. Site fees were discussed. The NWVC&M Museum was asked to be open during events on the grounds.

Bert Harrison reported that the Education Committee meetings

are open to all members and will be held in the Service Station at 6:30 on July 16, September 10, and November 9. Ray Hansen is the Chairman of the Education Committee. They have planned a BMW Motorcycle presentation for September 1<sup>st</sup>. On September 15 Jerry Grulkey is going to make a presentation. In October there will be a motorcycle group presentation.

Bert was disappointed at the poor showing of people at Bill Becker's restoration presentation in April. If we don't attend these seminars we miss out on the knowledge and also, quite possibly, grant money because our museum is an educational facility. Les Layton volunteered to include the schedules of these meetings in Branch 15 newsletter.

The Silver Falls Tour is October 20 and 21. Get your reservations to Bjorn for this event. See an article on this event on page 9 of the newsletter or find it on the website.

### New Business

Bert Harrison showed copies of new books on automobile mascots. These are the definitive books of their genre and are expensive, costing \$85 (Canadian) per volume. The author, Jim Colwill, has offered them to the museum to sell at a very good discount. A 3-volume set, titled *The Automotive Mascot; a Design in Motion*. Volume 3 has not been printed. No action was taken.

Education Committee meetings are at 6:30 pm on

- July 16
- September 10
- November 9.

in the Service Station.

**Everyone is welcome.**

Send newsletter articles and website material to

Al Lake, at

[allvintagecar@comcast.net](mailto:allvintagecar@comcast.net)

**Next newsletter deadline:  
September 15**

### Museum Store

Baseball cap	\$10
T-shirt	\$12
Sweatshirt	\$20
Denim & Twill Jacket	\$135
Suede leather Jacket	\$175
<b>Personalize the jacket: Add a name \$8.00, add a front banner \$10.00</b>	



## Letter from the President July 2007 by Mike Bostwick

The Museum is made up of you and your friends. What the Museum becomes in the future is up to you and your friends and the effort we are willing to put in to it. Please get more involved in the operations and activities of the Museum. Right now there is a small group of members who are working very hard for all of us and I would like to thank all of them for their hard work and dedication to the Museum. The Board/Member meetings are the third Wednesday of the month at 6:30 PM in the Gas Station at Brooks and everyone is welcome to attend. Try to come, the more members that get involved the easier it is for everyone.

The Museum has a grant committee pursuing grants from several different organizations. We have been turned down by a few but we are going to try other grant opportunities. The Museum has been built by the hard work and donations from members and friends. One thing to be thinking about is that if we do receive a grant from an organization there will more than likely be terms attached to it requiring matching funds, so look to the future and plan since we may be looking for matching funds from you, your friends or clubs to make the

dream of the Museum come true. Throughout the year members of the Museum spend time at the Station and other events promoting the Museum. These are an important jobs and it would be helpful if more members could participate. If you could help at the Station or if you are planning to attend one of the events where we have a booth, please volunteer to spend a little time helping out by contacting one of the board members.

We need someone to work as Volunteer Personnel Scheduler, someone who will work with the Board to be the contact person and schedule members to work events that the Museum participates in (Swap Meets, Car Shows) and at the Museum. We also need someone to work as the Membership Coordinator. The Membership Coordinator tracks all member addresses and dues. The Museum Events Coordinator (the contact person for anyone that would like to use the Museum Campus) and others have been working hard to coordinate events at the Museum with those at other Powerland attractions. There is a calendar at the Museum's Service Station that lists all the scheduled events, so if

you are interested in scheduling an event at the Museum Campus take a look at the calendar and see if the date you want is open and read the article on page 4 about the Campus Use Policy.

The 2007 Swap Meet is set for July 21. This year we are also including a Clubman Motorcycle Show and Swap Meet in conjunction with our Swap Meet. Another highlight of the Swap Meet will be the Dinner for Members on Friday evening July 20<sup>th</sup> from 6:30 to 8:00 p.m. It will be a Barbeque Dinner of Ribs and Chicken prepared by the Markum Inn. This is a very good dinner so please plan to attend and spend time talking with old friends and making new ones. The dinner is open to all Museum Members and their families at a cost of \$17 per person. You can find the reservation form on the web site on the Swap Meet Application Form Note: members don't need to buy a stall to come to the meal. This is an annual event where members can ask questions and find out what is going on at the Museum.

Thank You for being a Member  
President Mike Bostwick  
503-245-5444  
reb.mlb@netzero.net

## NWVC&MM 3rd Annual Swap Meet and Barbeque

The Third Annual NW Vintage Car & Motorcycle Museum's Swap Meet will be on Saturday, July 21 from 8 am to 3 pm with set up on Friday the 20<sup>th</sup>. This year the show will feature a Pre-1949 vehicle section for cars and motorcycles. Also this year there will be a Clubman Motorcycle Show and Swap Meet.

This swap meet is on the grass with vehicle corral spaces and swap spaces in 10' x 20' and 15'

x 15' for \$25. Commercial vendor spaces are \$25 for a 10' x 10' space and \$50 for a 10' x 20' space. Club displays are 10' x 10' and are free. There are 350 spaces available on a first-come basis. General admission is \$5 and parking is free. Museum members are invited to a Vehicle Show is free with paid admission. Friday night, July 20, is a Barbecue ribs and chicken meal for Vendors and Museum Members.

This is a no-host event and the cost is \$17 per person. Food is provided by The Markum Inn and will feature barbecued ribs and chicken. For more information contact Don Petersen (503-246-6936) or Mike Bostwick (503-245-5444). Use the registration form on the Museum website to reserve a spot at the Barbecue. For information about the Clubman Meet contact Tom Ruttan (503) 638-1746.

## April Education Class

Bill Becker presented a program on the basics of auto restoration at the Service Station on April 28th. Bill is a long time car restorer and enthusiast from Portland, Oregon. He teaches a class at Portland Community College called "Vintage/Hot Rod Restoration Process". His knowledge is truly outstanding. Having grown up in the hobby he is often seen driving his original Brush roadster. Thanks Bill.

### Ways to support the Museum

- Attend Museum meetings: third Wednesday of each month at the Service Station
- Volunteer at events
- Participate on a committee
- Share your ideas
- Help at the High School Car Show on July 1st, 2008
- Buy a paver
- Make a Step Pledge
- Donate parts or memorabilia
- Send an article to the newsletter editor with a photo of your vintage vehicle.
- Pass out Museum brochures to anyone with a vintage vehicle
- Work a weekend at the Service Station
- Invite a friend to a Museum event
- Give your newsletter to another car buff

July 15 - Forest Grove Concours  
<http://www.forestgroveconcours.org>  
 Campus of Pacific University,  
 Forest Grove, OR

Tickets Advance Purchase  
 Adults - \$12  
 Youth (6-16) - \$5

Tickets Day of Show Purchase  
 Adults - \$15  
 Youth (6-16) - \$7

## New Feature US Auto Museums

by Sue Lake

### Deer Lodge, Montana Montana Auto Museum

This is one of several museums in the old Prison Museum in Deer Lodge. The Museum is at 1106 Main Street. The Montana Auto Museum houses a representative collection of vintage automobiles from 1903 through the early 1970s. Included are an original 1903 Model A Ford (this car was the first vehicle produced by the Ford Motor Company and was also called the Fordmobile; the next Model A Ford would come out in 1927), a 1928 Pierce Arrow motor home, antique camping vehicles, several 1950s Chevrolets and muscle cars from the late 1960s and early 1970s. Included are some interpretive displays and photographs that enhance the collection. The unique thing about this auto museum is that the cars are arranged in chronological order.

<http://www.pcmf.org/auto.htm>



Montana Auto Museum

Please submit articles about museums for future newsletters.

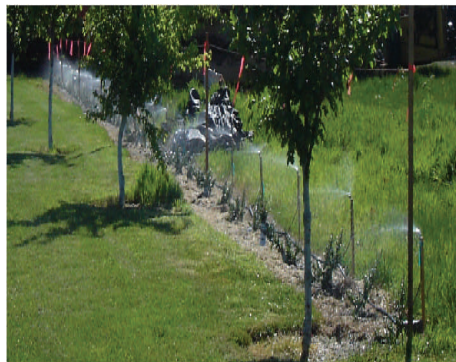
## Hedge Planting

by Ed Weber

On April 20, 2007, John Chandler, Arnie Anderson and Ed Weber planted 50 hedge plants on the property line between our Museum Campus and the Forestry Machinery Museum property to the south. The plants are Ceanothus impressus of the Dark Star variety. They are commonly called California Lilac. In about 5 years these plants will fill in and will provide a hedge about 4 feet wide and 6 feet tall.

This variety of Ceanothus begins blooming in mid-May, and when in full bloom the first of June, the entire plant will be covered with small dark blue lilac-like flowers. This hedge should provide a beautiful addition to the Campus area.

A micro-jet sprinkler system has been installed by Ed Weber to provide water to the young plants during establishment. After the first or second year these plants should get enough moisture from the soil and should not require additional irrigation.



### Museum Booth Volunteers needed

A booth will be at the following car shows:

July 15 Concours de Elegance,  
 Forest Grove  
 August 4 Great Oregon Steam-Up, Powerland, Brooks  
 October 13-14 NW Collector's Car Show, Portland Expo



## Autumn Tour by Bjorn Klingenberg

This event is what owning and enjoying a vintage vehicle is all about: a leisurely drive at a nice pace along some of the most pristine back roads in Oregon allowing you to take in the magnificent scenery while conversing with friends and family on board. This tour is reminiscent of picnics of days long gone.

The staging point will be in Woodburn at the French Prairie Middle School. All vehicles will start from there at 10 am sharp. The tour, about 65 miles long, unfolds as follows:

### **Saturday, October 20**

- Staging in Woodburn
- Departure at 10 am
- Route 211 through Molalla and right on Dehodge Road
- South to Dickey Prairie
- Dickey Prairie Road South across Molalla River to Trout Creek Road
- Up over the hill and South on Sawtell Road
- Maple Grove Road to Scotts

- Mills and to 213 to Silverton
- Gathering in Silverton on reserved parking
- Coffee or lunch at O'Brien's or other preferred cafe
- 214 to Silver Falls Park and left to the Conference Center.
- Social gathering in Smith Creek Hall reserved for our party
- Dinner at 6 pm

Film entertainment includes the films by renowned Danish film director, Theodore Dreyer: "Did they catch the Ferry?" and "The Making of a Morgan" at 7:30 pm

### **Sunday, October 21**

- Breakfast at 8 am
- Drive across 214 to Silver Falls State Park
- Foot hike under the falls
- Picnic lunch in grassy spot
- Adjourn

Now to the hard stuff. We plan for a total of thirty participants and fifteen cars plus motorcycles. The Museum has made a deposit to hold the facility for so many members. There may be room for

more if needed. At a given point our deposit becomes non-refundable and it is necessary, in order for the museum not to incur losses that participants commit to the event by paying their fee of \$58 per person to the Museum treasurer, John Chandler.

The deadline for a tour reservation is July 19, 2007.

The Museum reserves the right to cancel the event on that date if fewer than twenty members have paid their fee.

It is an option to join the tour and the dinner at the conference center without staying overnight. The price for this is \$15 payable by the above date.

In any case, please notify Bjorn Klingenberg about your intent to participate either by phone (503) 873 6777 or email [bklingenberg@verizon.net](mailto:bklingenberg@verizon.net)

For additional information link to the Museum website at:

<http://www.nwcarandcycle.org/Events/AutumnRoadTour.html>

## Volunteers of the Quarter by Al Lake

### **Rae and Bruce Scott**

Rae and Bruce Scott are the Museum Volunteers of the Quarter. They were the co-chairs of this year's High School Show and Shine Car Show. The Car Show is the premiere event for the Museum and requires a great deal of time to plan and implement. There are many, many details to make this Car Show a huge success.

Everyone at the Car Show had a great time. We had more sponsors than we have ever had. All of the students thoroughly enjoyed the Car Show.

Thanks to Rae and Bruce for your time, effort, and support of this great event.



*THANKS for a great Car Show  
Rae and Bruce!!*

## 1958 Nash Metropolitan by Ed Weber

Arnie and Linda bought their 1958 Nash Metropolitan Hardtop from Dr. Vernon Casterline, a long-time resident of Keizer, Oregon. They found out about the availability of this car while talking to Dr. Casterline during the Iris Festival car show in 2004.

Dr. Casterline had restored two Metropolitans over the years and as time passed he decided to sell one because he lacked garage space for both cars. Arnie and Linda were excited to acquire the car and give it a good home. Nash Metropolitans were built in England, by Austin, to Nash

specifications. A total of 94,982 were produced. Nash cars were sold from 1954 through 1962. This 1958 Metro has a 1500 cc engine with 52 HP. It has an advertised top speed of 76 mph with a cruising speed of 55 to 60 mph.



Arnie and Linda enjoy taking the Metro to the Orphan Car Show, and to other shows in the area. This car is a lot of fun to drive, and people respond with smiles and waves as they drive it on the highway. Isn't that the way it is with all vintage vehicles?

The Nash Metropolitan small economy car was introduced in the United States and Canada in March 1954. The 85-inch wheel-base Metropolitan was offered in two body styles: the 2-door hardtop and convertible.

## Driving in Italy by Marty Boehme

After two weeks of being treated to the most spectacular Italian ancient art and buildings you've ever seen, we rented a car. With a country villa B&B as a goal, we struck off on our own.

Our "upgrade" ended up being a small Ford Focus station wagon. It's one not available in the USA as it was diesel powered. We were thankful, as diesel was a bit less than the \$6 USA being charged for gasoline. It was also a five-speed that's typical of all European cars. Those who have never driven anything but automatics pay twice as much - about \$150/day!

If anyone would ask us about what NOT to do it would be: "Don't be far from home after dark." Picture yourself in an unfamiliar country. Poor signage is against you. Only automatic gas stations are open. Stopping

to ask for directions does not work - customers pumping gas only speak Italian. Finally a young person was found who spoke some English. We did find home.

Driving in small ancient towns was a hoot. Most streets were cobblestone. One town had a narrow street leading into it with one-way traffic being controlled by a stoplight. We went up one steep street so narrow, that I thought we were going to have to fold-in both rearview side mirrors. One castle gate even had a slight turn in it that I thought was going to scrape the sides of the car. I could see that the natives drive small cars for a very good reason.

My most favorite car to photograph was the 1973 500 cc Fiat. It's really cute like our family's '59 Vespa car. I took pictures of several. One was with

a good-looking Italian girl. I told her I was from the "Fiat Polizza" and needed her in the picture. Several photos were taken of the minuscule Smart two-person sedan. I measured its wheelbase at 72 in. Yet, it was observed on the freeways running faster than our tour bus.

Our innkeeper had a neighbor who owns several collector cars. I was treated to a shop tour. Most of the cars are pre-WWII vintage. There were lots of Fiats including two little Topolinos. One car was an early '60s Cadillac convertible. It wasn't driven much because it got only 4 kilometers per liter. He's in the process of building a vintage racecar. All he has are the headlight buckets; an original restored motor, a radiator shell, and grill. When I asked about

street rods, I found that government regulations do not permit modified cars. However, there was a similarity with an American car collector's shop - the fumes smelled the same. By the way, he's never seen or heard of a Vespa car. We saw no campers or camper shells on pick-ups. No tent trailers or teardrop trailers either. We saw several "caravans," the walk-in Tiny Travel Trailers ala USA. Outside cities and on freeways there were lots of truck mounted RVs the max being about 20 feet. This is a summary of our driving adventure in Italy.





## Great Oregon Steam-Up Car Show

This is a new event for Steam-Up. If you display your vintage (25 years or older) car, truck, or motorcycle then you will receive 2 **FREE** Steam-Up tickets

**When: Saturday August 4th  
10 am to 3 pm**

**Where: Antique Powerland**

Set up from 7:00 am to 10 am.

Vehicles must remain in the show area from 10 am to 3 pm. This is a show only. There will be no awards or judging

For more information contact:

Tom Ruttan (503) 638-1746  
truttan@earthlink.net

## Museum Show Goes to Sherwood by Ed Weber

On Saturday, June 9, 2007, Doug Nelson, Ed Weber & Chuck Neal left the Museum at 6:30 am with the 1932 Texaco Ford fuel delivery truck and attended the "All City" car show in Sherwood, Oregon. By "all city" we mean that the entire "Old Town" downtown area was completely filled with show cars, trucks, food booths and information booths.

In spite of the rain there was a lot of interest in the Museum and we spoke to lots of folks. We handed out information brochures about our Museum and activities at Antique Powerland. Don Lauinger, our Museum

Events Coordinator, just finished his Model "A" Speedster the night before the show and he brought the speedster to the show. Good job Don!

Our presence at these shows brings results each time as we tell more people about the Museum.



## Upcoming Events

1<sup>st</sup> and 3<sup>rd</sup> Wednesday of July and August - Stro's Cruise in, Stayton A&W Drive-in

Saturday night Blue Moon Cruise-in has moved to Keizer Bi-Mart parking lot.

July 7 - Philomath Classic Car Show, Philomath, 10-3

July 13-15 - Brooks 3rd Great Western Binder Bee, Powerland, 8-6

July 14 - Salem All Mopar Car Show, Riverfront Park

July 14 - Salem 5th Cruise-in Nazarene Church 12-4

July 15 - Forest Grove Concours. There will be a Museum booth at this show. See page 8.

July 16-19 - Corvallis 4-day 640 mile Vintage Speedster Run, NWVSC of Portland 509-839-8080

July 20-21 NWVC&MM Swap Meet & BBQ (July 20th)

July 28-29 & August 4 & 5 Great Oregon Steam-Up

July 28 - Stayton SummerFest

August 4 - Great Oregon Steam-Up Car Show.

Sept. 1 - 16<sup>th</sup> Carousel Cruise. Riverfront Park 8-3:30

Sept. 2 - Brooks 7th Hot Summer Nights, Powerland.

September 8 - Redmond Swap Meet, Deschutes Co. Fairground (541) 548-4467

September 9 Orphan Car Show, Powerland 8 -3:30

September 10 Education Committee, Service Station 6:30 pm

September 15 Presentation, Jerry Grulkey, Service Station 10 am

September 19 Board/Member Meeting, Service Station 6:30 pm

October 20-21 - Autumn Tour. See page 9 more information.

## Hot Wheels Then & Now

Comparing the '57 Bel Air and the '07 Impala

### '57 Bel Air

### '07 Impala

#### ■ Standard

Tail fins, chrome molding and hubcaps, deep-pile carpet

CD player; air conditioning, power windows, steering, brakes

#### ■ Options

Radio; air conditioning; power windows, steering and brakes

8-way power-adjusted, heated leather seats; universal home remote control

#### ■ Safety features

Chrome hood rockets and front bumper bullets

Air bags, antilock brakes

■ **Weight** 3,566 pounds 3,790 pounds

■ **Hot engine** V-8, 284 hp V-8, 303 hp

■ **Mpg in city** 14 18

■ **Price** \$2,375 \$28,655

■ **Restored** \$203,500

Source: AARP Bulletin

[http://www.aarp.org/bulletin/power\\_of\\_50/hot\\_wheels.htm](http://www.aarp.org/bulletin/power_of_50/hot_wheels.htm)



## From the Toy Box By Bill Hellie

The two Constructor cars pictured here are made by Meccano Company of Liverpool, England in the 1930's. They are similar to the Jaguar 100 in vogue at the time. The bodies can be made into a boat-tailed speedster, a coupe, or a roadster. They are powered by clockwork motor and have brakes, steer-

ing, and demountable rubber tires (Dunlop). The small No. 1 car is 8.5" L, 3.5" W, 3"H and is owned by Bill Hellie. The large No. 2 car is 12"L, 4/5"W, 3.5" H, and is owned by Chip Hellie. This car also has electric lights and tall hand-brake lever. Meccano Constructor cars are very desirable.



## It's Time for Dues

Everyone's dues are due in the month of June. Please send your dues to:

Northwest Vintage Car & Motorcycle Museum  
PO Box 15,  
Salem, OR 97308-0015

Membership dues are:

### General Member

Annual individual  
\$35.00 or family  
\$50.00

**Club Member** Annual  
club membership  
\$300.00

### Founding Member

\$185.00 (\$150.00 one  
time building fund contri-  
bution + \$35.00 annual membership)

For more information please call Ferne Hellie  
503-364-7809



**View this newsletter in color on the Museum  
Website at [www.nwcarandcycle.org/newsletter](http://www.nwcarandcycle.org/newsletter)**



PO Box 15, Salem, OR 97308-0015  
<http://www.nwcarandcycle.org>

The Northwest Vintage Car & Motorcycle Museum operates on a fiscal year from June 1 to May 31. Annual dues are due June 1st. See the "It's Time" article above or call 503-364-7809 for more information. Send a check to NWVC&MM, PO Box 15, Salem, OR 97308.