

Northwest Vintage Car & Motorcycle Museum Message

Inside this issue:

Museum Headlights	2
2009 Car Show Sponsors	3
Motorcycle Hall of Fame	4
Ardie Overby Shop Tour	5
Ferne did so much	5
Treasurer's Thoughts	6
Spokesman	6
OVM Bike Show Winner	7
From the Toy Box	8

Award winning newsletter



Al & Sue Lake-Newsletter Editors

Volume 7 issue 2
April-June 2009
Quarterly newsletter

Deadline for the next
newsletter is:
June 15th

Please submit articles for
future newsletters to:
allvintagecar@comcast.net.

Museum Activities

Member Board meetings.

The third Wednesday of each month at 6:30 pm at the Service Station. Meetings are April 15, May 20, and June 17.

Education Committee

meetings at the Service Station on April 10th and May 8th at 6:30 pm. Chalet Restaurant

6th Annual High School Car Show, May 30th.

Show starts 11:00
Voting 12:00 - 1:00
Awards 2:00

April 25 - Model T Seminar

Don Blain will be presenting a seminar on Model T front ends and steering gears at the Service Station at 10 am.

See the complete 2nd quarter calendar of upcoming events for the Museum on page 7.

Museum Members

Museum members put in many hours on projects and at events. We have many different projects, and many different types of activities. There are many ways to help. Ask a Board member. All levels of skill are accepted.

We need your help.

Dedicated in Memory of Ferne Hellie by Sue Lake

This newsletter is dedicated to the service of Ferne to the Museum.

Ferne passed away on March 22 at 12:22 am. Ferne had to resign from her many volunteer jobs with The Northwest Vintage Car & Motorcycle Museum in January. Ferne's contributions to the Museum will be remembered forever. She has been a tireless volunteer, an enthusiastic supporter and an inspiration to so many of us. Her smile has been a beacon of joy for those who were privileged to meet her and to know her. Our lives are richer because she has been in them.

She will be missed by us as individuals and by the Northwest Vintage Car & Motorcycle Museum as an organization.



Photo by Sue Lake

For more information about the Northwest Vintage Car and Motorcycle Museum go to <http://www.nwcarandcycle.org> or e-mail Al Lake at allvintagecar@comcast.net.

2008-10 Museum Board Members

Doug Nelson	Mike Bostwick
John Chandler	Tom Ruttan
Don Blain	Ray Hansen
Neil Beutler	Marty Boehme
Burt Edwards	Sherri Cartwright
Larry Leek	Bill Hellie
Don Lauinger	Tom Kneeland
Mike Larsen	Ed Weber

Northwest Vintage Car & Motorcycle Museum

P.O. Box 15
Salem, OR 97308-0015

The Northwest Vintage Car & Motorcycle Museum is a 501c(3) non-profit organization. We are dedicated to providing educational opportunities about vintage cars, trucks, and motorcycles for all ages.

On the web at: <http://www.nwcarandcycle.org>

Northwest Vintage Car & Motorcycle Museum is located at Antique Powerland on Brooklake Rd. (Exit 263 from I-5), west of I-5
10 minutes north of Salem - 30 minutes south of Portland

Museum Headlights: 6th Annual High School Car Show By Al Lake

On May 30th of this year the Northwest Vintage Car & Motorcycle Museum will hold the 6th Annual High School Show & Shine Car Show. This Car Show is unique because it is the only car show in the northwest entirely dedicated to high school students and their vehicles. If you have not come out to the High School Show & Shine Car Show you have missed one of the best car shows in the valley. The Car Show is fun because so many wonderful high school students attend. To the right are the 2007 and 2008 High School Car Show participants. One of the primary purposes of the Museum is to provide educational opportunities. Be sure to attend the 2009 Car Show. It is a great Car Show and is a lot of fun!

We have the Wooden Nickel back again to provide their great grilled food.

Many thanks to the volunteers and sponsors who make this Car Show possible and to the students who make this show worthwhile and fun.

Photos by Sue Lake



Oregon's 150th Birthday Article & Photos by Burt Edwards



The Museum was represented at the February 14th Oregon's 150th birthday celebration at the Capital with Ed Weber's 1927 REO, Sir Elliott, and Doug Nelson's 1932 BB Ford truck. The 1932 Ford truck is a Texaco gas truck and holds gasoline, oil, and kerosene.



2009 Car Show Sponsors

Please show your gratitude to the 2009 High School Car Show Sponsors. Tell them **THANKS!**



Pentastar



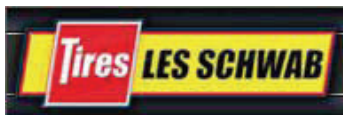
Miata Car Club



Portland Buick Club



Streamline Hot Rods



Les Schwab



Industrial Finishes & Systems



ALL Computer Consulting



Campbell Orthodontics



Capital Area Mustang



Maaco



Frontier Bank



Brooks True Value Hardware



Willamette Valley Model T Club



Hear No Evil Hi-Fi



Joe Guerra



Tarter's
KEIZER COLLISION CENTER INC

Keizer Collision Center



Certified Automotive Repair



South Commercial Auto Company



Dan Judy Automotive



Amsoil/Greenwood Marketing



Bob's OK Tires



Joe's

Sponsors are still needed.
If you would like to sponsor a trophy, please contact John Chandler, 503-371-1852.



Pacific Sanitation

Museum Minute: US Auto Museums

by Sue Lake

Motorcycle Hall of Fame Museum Pickerington, Ohio

The museum is located at 13515 Yarmouth Drive.

Rotating exhibits in four galleries feature motorcycles – from antiques to present-day machines – and displays relating to the sport. The Hall of Fame contains motorcycles once ridden by inductees.

The 2009 display is:

MotoStars: Celebrities + Motorcycles:

Priceless machines, exclusive memorabilia and tales from celebrities' favorite two-wheel adventures.

Photo by Sue Lake

Throughout history, motorcycles have played a starring role in the public and private lives of a significant number of celebrities and personalities. Whether they are adventure tourers, collectors, builders or ambassadors of the sport, each MotoStar has a unique story to tell about what fueled their interest and love for riding. Museum visitors will find these private glimpses into the community of motorcycling especially compelling.

<http://www.motorcyclemuseum.org/>



Thank you By Doug Nelson

THANK YOU Portland Triumph Owners Association for making a \$400 donation to the Model "T" Speedster Program. Doug and Kay Nelson were invited to the annual banquet, February 28, 2009, to receive this much appreciated gift on behalf of the museum. Chairman Nelson delivered a short talk about the "T" speedster program and invited the Triumph owners to include a trip to our museum this year on their tour schedule.

Northwest Vintage Car & Motorcycle Museum

A 501 (c)(3) non-profit organization

Paver Brick Agreement

Name: _____

Address: _____

Phone: _____

E-mail: _____

has purchased a paver brick to be used at the main Museum building of the Northwest Vintage Car and Motorcycle Museum at 3995 Brooklake Road.

Each yard of concrete purchased at \$125 entitles the purchaser to one paver brick to be inscribed as follows:

6" X 12" single brick with
3 lines*
\$125

12" X 12" single brick
with 6 lines*
\$250

* 15 characters per line including spaces or a total of 45 characters. Business logos available for double bricks only.

Donor signature _____

Received by _____

Date _____ Check # _____

Send Checks To:

Northwest Vintage Car & Motorcycle Museum
John Chandler
Treasurer
P.O. Box 15
SALEM OR 97308

Thank you for your tax deductible gift!

Ardie Overby Shop Tour photos and article by Al Lake

On February 21st a large group of Museum members went to Ardie Overby's Shop at 5155 SW Erickson Avenue in Beaverton, Oregon. The group was shown an exquisite and well-designed shop that houses a fine group of cars and trucks. Thanks to Ardie for inviting us to his shop.



Model T Speedster

By Doug Nelson

The speedster has now made two roadster show appearances along with the students and their mentors. Thank you to the promoters of the Salem Roadster Show, Bill McClure, and to the Multnomah Hot Rod Council. Both shows gave the museum free space to display our vehicles and promote the Model T Speedster program and the museum.

The students are enjoying the opportunity to work with "the old guys" and have often admitted to learning a lot. Our continued thanks to Bert Harrison and Jay Clark for the use of their shops, and to Enterprises Rent-A-Car for furnishing a van and driver for the students. Currently the goal is to have the existing Model T Speedster running for the upcoming All High School Car Show May 30, 2009. See ya there!

Ferne did so many things to help the Museum by Bev Chandler

Ferne did all of this:

- She learned Past Perfect Museum Software on which she maintained the membership list, tracking dues payments and mailed dues notices, and issued membership cards and welcoming letters.
- Purchased all stamps, paper, and envelopes for museum projects and never asked to be reimbursed by our Treasurer.
- Catalogued donations – taking digital photos of everything that was donated. These photos were retained on a CD and were also printed into 5 x 7 cards, with donor's names and other pertinent information. These cards will be placed in the museum library for future reference and inventory.
- Reviewed, edited, and prepared correspondence for the Board Chairman and others.
- Prepared minutes of the Board of Directors meeting (and supplied cookies and coffee at her expense for all Board meetings and other events).
- Wrote thank you letters for donations (most often personalizing each one) and sent out donation forms
- Coordinated receipt of the "gifts" to Founding and Sponsoring Members
- Managed Internet communications - reminders, updates, weekly program updates, address changes, newsletter returns, and basically anything that had to do with correspondence.
- Proofread the Museum newsletter.
- Served on the Grant Committee from its inception through preparation of the Murdock grant request.
- Cleaned the Texaco service station "top-to-bottom" at least once per year.



Photo by Sue Lake

- Volunteered to be at the service station during Powerland's Steam-up weekends, and always eager to help in any way at other Museum events.
- Usually gave up at least one Saturday or Sunday per month to be at the Museum during the summer "open" days.

This is an incomplete list because Ferne undoubtedly did many more things none of us were aware of.

Thoughts from the Treasurer By John Chandler

All of us have been working at a dream started nearly eight years ago. In that time many new things have happened at NWVC&MM, all of which have been reported in your quarterly newsletter.

What has been given to us as a challenge lately is the M.J. Murdock Charitable Trust grant. This, with the much needed help from all of you, will allow us to finally build the easterly section of the museum. Many new bids are in and it is felt, with a friendly push on all our members and donors, we will be able to finalize the purchase of the steel material and possibly have it in the air by Steam-Up. Any dollar amount you can contribute toward the Building Fund will help. If every person who gets this quarterly newsletter would donate \$100, I know for a fact that construction would begin.

The treasurer needs dollars to run your museum, so don't forget dues are due June 1, 2009. Many thank yous for your dues renewals.

Many of you may not know, but we are one museum of the 14 on the Powerland campus. They also have expenses, with quarterly newsletters, insurance, etc. If you'd like to be a part of Antique Powerland Museum Association (APMA), dues are \$20 per year. This would allow you to have a better idea of what goes on at APMA on a quarterly basis, plus membership would give you a feeling of ownership. Powerland's address is:

Antique Powerland
3995 Brooklake Road NE
Brooks, Oregon 97303

As always, we are looking forward to a year of good activities at the Museum.

The Spokesman

by Doug Nelson

On March 18th, the building committee recommended to the Board of Directors that we proceed with applying for a building permit to build the easterly 100 x 100 portion of our main museum building.

The building committee has been working with contractors and suppliers and hopes to start construction June 1, 2009. The difficult economy is working in our favor so the bids are lower than expected.

A fund raising appeal has been mailed to help bridge the gap between funds on hand, the \$100,000 J. R. Murdock grant, and the current costs of construction. Please consider helping with a donation. You can purchase a paver stone or make a cash donation.

Please support the Museum expansion.

The Steering Column: Notes from the President By Mike Bostwick

There are many things going on with the Museum.

- We hope to start putting up the 100x100 part of our building this summer a little sooner than planned. We still need some more funds to reach our goal.
- The next big event is the High School Car Show on May 30th.
- The Swap Meet & Car Show is still growing. Please come on Sunday July 12 as a vendor or as a buyer. The Swap Meet is lots of fun and there are lots of things to buy.
- The Barbeque Dinner on Saturday night is for vendors and Museum members. It is a great time for members to come out to see what is happening at the Museum. All the proceeds from the Dinner and Swap Meet are divided between the Museum maintenance, the endowment fund, and the Swap Meet for next year.
- We had booths at the Portland Auto Show Decade of the Auto,

The Salem Roadster Show, and The Portland Roadster Show. If you know of an event to get the word out about the Museum come to a meeting and talk about it or contact one of the board members.

- The Education Committee is working hard to find and develop programs. This year there are a number of classes and seminars. Check the Museum web site for dates and times. If you have an idea or information that might be interesting to others, please let a member of the committee or board member know, they would be happy to work with you to develop a program.
- The Model T Speedster Program with Roberts High School Students is working very well. We hope to build a building this spring that will give the program a permanent site to work in and store the speedsters and spare parts. If you have any Model T parts you don't need, the Mu-

seum could use the parts for the program. Thanks to all the Museum Mentors who are working on this project.

- With the growth of the Museum we need more volunteers to work on and maintain what we have already accomplished. We need:
 - * A maintenance director
 - * Someone to schedule volunteers
 - * Volunteers for projects, committees, and to operate the Museum

Get involved and help us.

Our great secretary Ferne Hellie had to resign for health reasons. We have divided up all she did and you would be amazed at how many people it takes to do the jobs she did. We are thankful for all of Ferne's hard work. She will be missed at the meetings. She has done so much for the Museum.

You can contact me at: 503-245-5444 or reb.mlb@netzero.net

The Vintage Station: Upcoming Events

April

- 3-5 Portland Swap Meet, Expo Center, 7:00 am to 5:00 pm
- 5 APMA Board meeting, Powerland, Brooks
- 10 Education Committee meeting, 6:30 pm Chalet Restaurant
- 15 Museum Board Meeting, 6:30 pm Service Station
- 25 Model T Seminar, 10 am Service Station

May

- 3 APMA Board meeting, Powerland, Brooks
- 8 Education Committee meeting, 6:30 pm Chalet Restaurant
- 20 Museum Board Meeting, 6:30 pm Service Station
- 30 6th Annual High School Car Show, 11:00 am Service Station

June

- 18 Museum Board Meeting, 6:30pm Service Station
- 21 Salem Vintage Auto Swap Meet, Chemeketa Community College, 7:00 am to 3:00 pm

July

- 11 Member BBQ, 6:00 pm, Antique Powerland
- 12 Swap Meet, 8:00 am to 5:00 pm, Antique Powerland
- 13 Education Committee meeting, 6:30 pm Chalet Restaurant
- 25-26 Great Oregon Steam-Up

August

- 1-2 Great Oregon Steam-Up, Powerland
- Board Meetings are open to everyone to attend.

Museum Shop By Doug Nelson

A "period" shop will be built east of the Texaco service station this summer. It will be a 20 x 24 wood-framed building using donated logs cut by the Miller Saw Mill at Powerland. Other donations of materials and labor are coming together.

The Larry and Janette Epping Foundation of Salem has made a generous \$5,000 donation for this building. Mike Wellman, Architect, has donated the plans. Thank you, Mike, for your continued support of the museum and Powerland.

This building will give a "home" for the Speedster Program, but will be available for other museum projects as well. Volunteers can call Doug Nelson, 503-399-0647, to assist.

Model T Tools Needed By Doug Nelson

Needed: Any miscellaneous fenders, hoods, running boards for any year Model T. Shop tools to furnish our shop to be built this summer at Powerland. Don't throw that part away donate it to the speedster program. We are also collecting Model "A" parts for a future project. Thanks to Bill McLune for the donation of a 1926 Oregon license plate

How to Join

Get the membership application form at: http://www.nwcarandcycle.org/images/Membership_Form.pdf. Membership levels are:

General Member

Annual Individual \$35.00 or Family \$50.00

Club Member

First time payment \$500..Annual club membership \$300.00.

Founding Member \$185.00: \$150.00 one time building fund contribution plus a \$35.00 annual membership.

About Us

The Northwest Vintage Car & Motorcycle Museum is a 501c(3) non-profit organization. We are dedicated to providing educational opportunities about vintage cars, trucks, and motorcycles for all ages. We have a website at: <http://www.nwcarandcycle.org>

The Museum is an entirely volunteer, membership-owned museum open to people of all ages, with or without a vehicle.

www.WheelsThroughTime.com A Virtual Museum.

There are over 280 shows online about the museum and the collection. The site is free and lets you visit Wheels Through Time. They have their full gift shop online and virtual visitors are also able to purchase raffle tickets on the 2009 WTT Raffle Bike -- a 1947 Harley-Davidson Knucklehead.

OVM Bike Show Winner By Tom Ruttan

Our newly acquired Aermacchi race bike won a first place trophy in the American Motorcycle category at the Oregon Vintage Motorcycle, OVM, bike show last winter.

The motorcycle is a 1937 Indian 4.

Tom Ruttan is pictured with the motorcycle.



Pass this newsletter on to someone.
You can view this newsletter in color at nwcarandcycle.org.

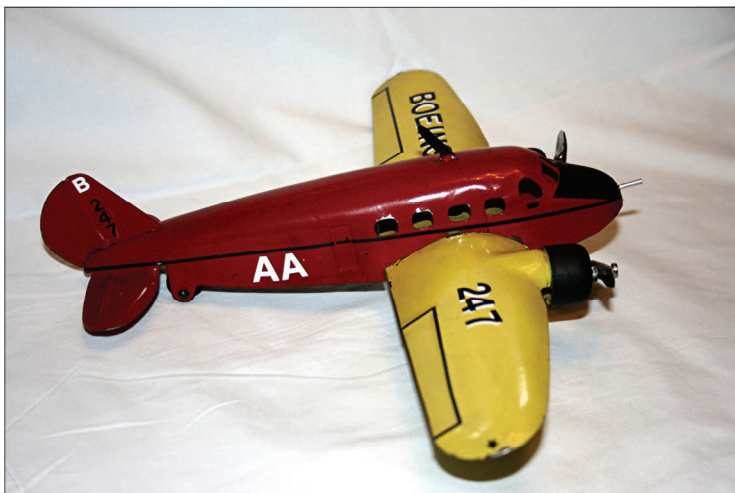
Buy a paver stone
see form on page 4

Your name
here

From the Toy Box By Bill Hellie

This is a 1930's Wyandotte toy airplane that was built to get permission from Boeing Aircraft Manufacturers to produce the toy. The toy airplane was made in Michigan. The toy airplane has a 13" wingspan and a length of 10". It is a

pressed steel twin engine airplane. The toy is a mock up of the Boeing Model 247, developed in 1933. This airplane was an all-metal, twin-engine airplane and the first modern passenger airliner.



1930's Wyandotte Toy Airplane - photo by Sue Lake

It's Time for Dues

Everyone's dues are due in the month of June.

Please send your dues to:

Northwest Vintage Car & Motorcycle Museum
PO Box 15
Salem, OR 97308-0015

General Member

Annual individual
\$35.00 or
Annual family \$50.00

Club Member

First time payment of
\$500.
Annual club membership of \$300.00

Founding Member

\$185.00: \$150.00 one time building fund contribution plus a \$35.00 annual membership

For more information please call John Chandler
503-371-1852.



PO Box 15, Salem, OR 97308-0015
<http://www.nwcarandcycle.org>

Volume 7 issue 2
April-June 2009

*Dues are due
\$
in June*